

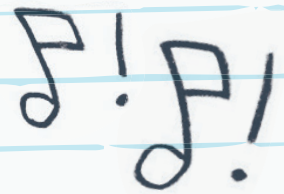
KISSES FOR JET

BOOK CLUB QUESTIONS



1. THERE IS NO SINGULAR WAY OF EXPLORING GENDER: IT CAN HAPPEN IN A VARIETY OF DIFFERENT WAYS. CAN YOU IDENTIFY AN EARLIER MOMENT IN THE STORY WHEN JET BEGINS TO FIRST CONSIDER THEIR GENDER?

2. WHY DO WE NEED ROLE MODELS?



3. WHAT ARE THINGS ABOUT KURT COBAIN THAT MIGHT BE SO INTERESTING TO JET?

4. KURT COBAIN IS A ROLE MODEL FIGURE THAT JET ASPIRES TO. ARE THERE ANY PEOPLE YOU LOOK UP TO IN YOUR LIFE, WHETHER THAT BE A FAMILY MEMBER, A MUSICIAN, AN ARTIST, OR A FRIEND? WHY?



5. IF YOU COULD PICK ANY SONGS TO BE THE SOUNDTRACK OF YOUR LIFE, WHAT WOULD THEY BE?

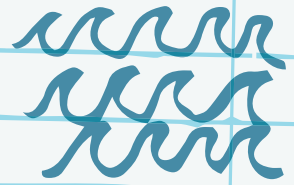
6. ON PAGE 74, JET MENTIONS THAT THEIR SCHOOL COUNSELOR RENÉ "FELT LIKE SOMEONE THEY COULD ACTUALLY TALK TO". WHAT CAN YOU INFER FROM THIS STATEMENT?

7. THROUGHOUT THE BOOK, THERE ARE DIFFERENT PEOPLE THAT QUESTION JET'S CHOICES: LIKE WHY THEY DON'T WEAR TIGHTER CLOTHES. HOW DO YOU THINK THIS IMPACTS JET? HAVE YOU BEEN QUESTIONED ABOUT YOUR CHOICES BEFORE? HOW HAS THAT MADE YOU FEEL?

Date:

8. ON PAGE 92, JET MENTIONS THAT THEY WANT TO DISAPPEAR. WHAT INFERENCES DRAWN FROM THE STORY MIGHT HAVE CONTRIBUTED TO JET FEELING THIS WAY? (EXAMPLE COULD BE RUDE COMMENTS MADE BY THEIR PEERS INCLUDING STEFAN, CONFUSION ABOUT THE KISS WITH STEFAN, HAVING TAKEN THE NECKLACE AND FEELING GUILTY, CONFUSION SURROUNDING THEIR GENDER IDENTITY, ETC.)

9. NOTICE THE COLORS THAT JORIS USES IN HIS ILLUSTRATIONS. DO YOU FEEL THAT THEY RELATE TO THE STORY? HOW DO THEY MAKE YOU FEEL?



10. IN THE STORY, JET GETS TRAPPED IN THE CLOSET, AND DESCRIBES IT AS A PLACE OF DARKNESS. WHAT COULD THE CLOSET REPRESENT?

11. ON PAGE 135, THE PHRASE "ACTUALLY A BOY" IS REPEATED ON THE PAGE. WHAT DOES THE USE OF REPETITION CONVEY HERE? IN THE FOLLOWING SPREADS, WHAT DO THE ILLUSTRATIONS CONVEY?



12. WHEN JET IS HAVING DINNER WITH SASHA AND THEIR FAMILY, SASHA SAYS SOMETHING THAT MAKES JET FEEL UNCOMFORTABLE. WHY COULD THIS POTENTIALLY MAKE JET FEEL THIS WAY?

13. WHAT DOES JET'S DREAM SEQUENCE ON PAGE 144 CONVEY? TAKE TURNS POPCORNING AROUND TO DISCUSS EVERYONE'S INTERPRETATIONS OF THE DREAM.



14. IN WHAT WAYS DOES JET'S FRIENDSHIP WITH SASHA IMPACT THEM?

15. ON PAGE 136, JET MENTIONS THAT THE IDEA OF MAKING A PERMANENT CHANGE TO THEIR BODY, LIKE A TATTOO, "FELT REALLY GOOD". HAVE YOU EVER MADE A PERMANENT CHANGE, WHETHER THAT BE TO YOUR BODY OR LIFE? HOW DID THAT MAKE YOU FEEL?



16. AFTER MEETING WITH A DOCTOR TO DISCUSS THE TRANSITION PROCESS, JET DECIDES TO BEGIN THEIR JOURNEY. IN WHAT WAYS DID HAVING THIS OPTION THAT WAS AVAILABLE TO JET ALLOW THEM TO MOVE FORWARD?

17. DESCRIBE JET'S FRIENDSHIP WITH SASHA.

18. IN WHAT WAYS DID THE CHARACTER SASHA ADVANCE THE PLOT?

19. WHAT WERE SOME CHOICES MADE BY THE AUTHOR THAT ADDED TENSION, MYSTERY, OR SURPRISE TO THE STORY?

20. DESCRIBE JET'S RELATIONSHIPS WITH THE KIDS AT SCHOOL. WHAT ARE THEIR EXCHANGES LIKE?

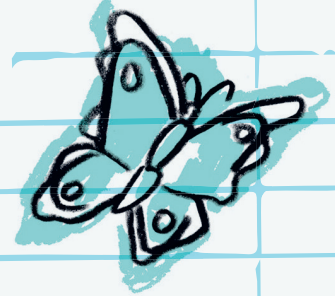
21. WHAT IS YOUR FAVORITE PART OF HIGH SCHOOL? LEAST FAVORITE PART?



Date:

22. DESCRIBE THE BINOCULARS AND THEIR MEANING.

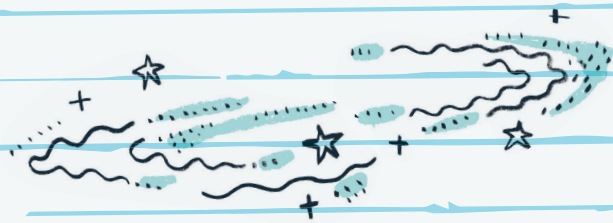
23. QUEER FOLX: WHAT MESSAGE DID YOU GIVE TO YOURSELF WHEN YOU WERE COMING INTO YOUR OWN IDENTITY?



24. HOW DOES ZEITGEIST IMPACT OUR IDENTITY, THEN AND NOW?

25. BONUS: FOR THOSE WHO ARE OLD ENOUGH TO RECALL THE ZEITGEIST OF THE LATE '90S, WHAT ARE SOME MAJOR ELEMENTS (POP CULTURE, TECHNOLOGY, EVENTS, ETC.) THAT COME TO MIND? HOW DID THEY IMPACT YOU?

26. HOW DO YOU THINK THE ZEITGEIST OF THE '90S IMPACTED JET'S IDENTITY?



27. HOW HAS THE INTERNET SHAPED YOUR IDENTITY?

28. HOW HAS THE INTERNET PLAYED A ROLE IN COMMUNITY?

29. HOW DOES JET'S LIVING IN A BOARDING HOUSE RATHER THAN AT THEIR PARENT'S HOME IMPACT THEIR EXPERIENCES?

30. HOW DOES SENSE OF PLACE IMPACT OUR IDENTITIES, THEN AND NOW?